



ALL IN ONE OTDR SOLUTION

OPM, VFL, AND SLS STANDARD ON ALL 930XC MODELS

FAST.

- One button test functions. Start measurements with the push of one button.
- Autotest. Automatically sets test parameters for optimum test results.
- Live fiber testing.* Tests fibers without disrupting live services.

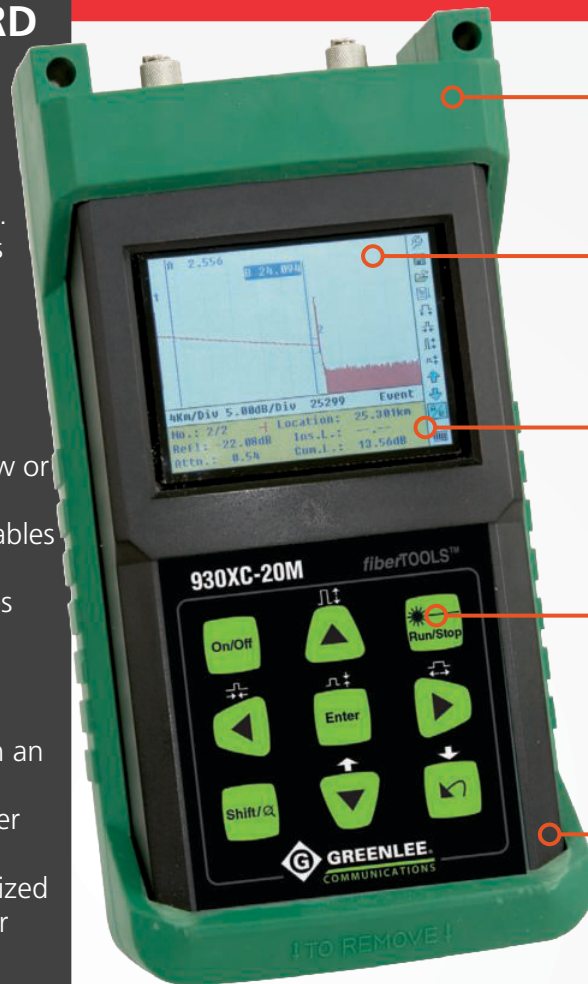
ACCURATE.

- Graphical interface. Easy to read, even in low or bright lighting conditions.
- Up to 38 dB dynamic range. Probe longer cables and see smaller reflections.
- Measure lengths and defects. Quickly locates faults.

RELIABLE.

- Link Viewer annotates the entire fiber link in an easy to interpret Pass/Fail format.
- Macrobend analysis locates troublesome fiber losses at 1550nm.
- Cable acceptance reports. Generate customized reports that include trace signature and fiber events.
- Long life battery. Work longer without recharge – up to 8 hours continuous use.
- Rugged construction. Drop-tested from 2m, impact resistant and built to perform (GR-196 certified).
- BellCore standard required by major telcos.
 - Meets all specifications at specified temperature extremes.
 - Operational and within specification after a simulated dust storm.
 - EMI resistant as per GR-1089.
 - Rain resistant with no direct paths*

930XC HAND HELD OTDR



- PROTECTIVE RUBBER BOOT
- MENU FUNCTIONS FOR SETTINGS AND TRACE STORE/RECALL.
- LARGE COLOR LCD DISPLAY
- RUN/STOP BUTTON TRUE SINGLE BUTTON TESTING.
- SEALED MEMBRANE PANEL



- DC CHARGER PORT
- OPTICAL POWER METER
- USB PORT
- VISUAL FAULT LOCATOR
- OTDR PORT
- OTDR 1625NM LIVE OUT OF BAND TESTING PORT

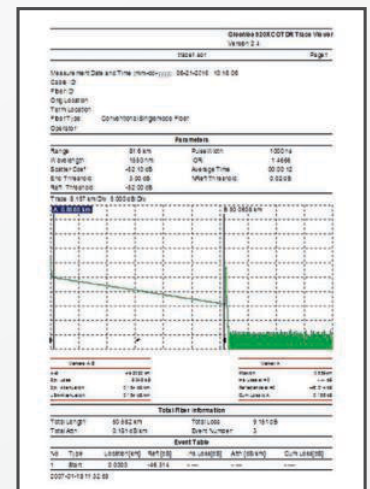
OTDR CABLE ACCEPTANCE REPORT GENERATION

MACROBEND ANALYSIS

- Quickly locate and measure losses at 1550nm
- User defined thresholds

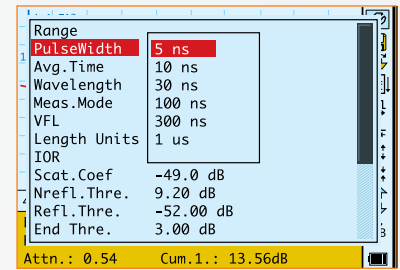
OTDR TRACE LINK VIEWER

- Automated Pass/Fail event analysis
- User defined thresholds
- Intuitive user interface for technician review

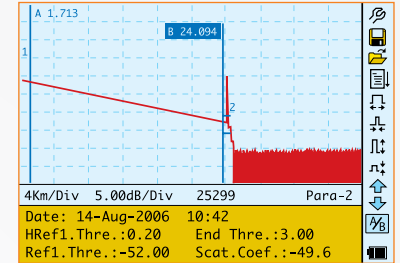


OTDR OPERATION MODES

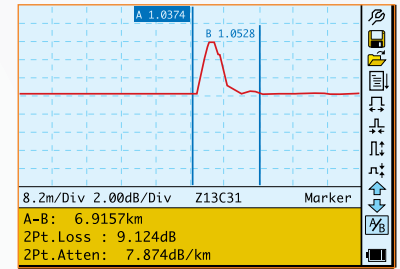
Specifications :				
SERIES	930XC-20M	930XC-20C	930XC-30P	930XC-30F
Wavelength (± 20nm)	850/1300	1310/1550	1310/1490/1550	1310/1550/1625
Dynamic Range (dB)	21/24	35	38/37/37	38/37/37
Event Deadzone (m)	≤2.5m	1.0	1.0	1.0
Attenuation Deadzone (m)	≤12m	4.5	4.5	4.5
Pulsewidth (ns)	12, 30, 100, 275, 1µs, 2µs	5, 10, 30, 100, 300, 1µs, 2.5µs, 10µs, 20µs		
Selectable Ranges (km)	0.1, 0.3, 0.5, 1.3, 2.5, 5, 10/0.1, 0.3, 0.5, 1.3, 2.5, 5, 10, 20, 40, 80	0.3, 1.3, 2.5, 5, 10, 20, 40, 80, 120, 160, 240		
Average Time	15s/30s/1 min/2 min/3 min			
Distance Measurement Accuracy	±(1m + 5X10 ⁻⁵ x distance + sampling space)			
Connector Type	PC or APC (interchangeable FC, SC, ST)			
Reflection Detect Accuracy	±4 dB			
Attenuation Detect Accuracy	±0.05 dB/dB			
Measurement Data Storage	1,000 test curves			
Data Transmission	RS-232/USB port			
Visual Fault Locator (VFL)	-3dBm; 650nm			
Optical Power Meter (OPM)	InGaAs			
OPM Wavelengths	850, 1300, 1310, 1490, 1550, 1625nm			
OPM Range	+6 to -70dBm (+6 to -60dBm @ 850nm)			
OPM Display resolution	0.01dB			
OPM MOD Identification	1kHz, 2kHz			
Stabilized laser Source (SLS)	Wavelength same as selected in OTDR mode ≤ -7dBm			
Power Supply	NiMH chargeable battery/AC adaptor			
Battery Life	Support over 8 hours operating on one charge or over 20 hours standby			
Operating Temperature	-10°C to 50°C			
Storage Temperature	-20°C to 60°C			
Relative Humidity	0 to 95% (non-condensing)			
Weight	0.87kg			
Dimensions	196mm H x 100mm W x 64mm L			



INSTRUMENT SETUP



OTDR TRACE



HI-RESOLUTION EVENT VIEWING

EACH MODEL COMES WITH

- Instrument
- Rechargeable battery
- OTDR Trace Viewer software
- Installation disk
- Data transfer cable
- AC adaptor
- Protective cover
- Carrying case
- Warranty card
- Certificate of calibration



ORDERING INFORMATION

CAT NO.	UPC NO.	DESCRIPTION
DUAL WAVELENGTH SINGLE MODE OTDR		
930XC-20C-UPC-FC	02610	OTDR, SM DUAL WAVE, 13/15, OPM, SLS, UPC FC
930XC-20C-UPC-SC	02609	OTDR, SM DUAL WAVE, 13/15, OPM, SLS, UPC SC
930XC-20C-UPC-ST	02611	OTDR, SM DUAL WAVE, 13/15, OPM, SLS, UPC ST
930XC-20C-APC-FC	02613	OTDR, SM DUAL WAVE, 13/15, OPM, SLS, APC FC
930XC-20C-APC-SC	02612	OTDR, SM DUAL WAVE, 13/15, OPM, SLS, APC SC
TRIPLE WAVELENGTH SINGLE MODE OTDR		
930XC-30P-UPC-FC	02615	OTDR, SM TRIPLE PON, 13/14/15, OPM, SLS, UPC FC
930XC-30P-UPC-SC	02614	OTDR, SM TRIPLE PON, 13/14/15, OPM, SLS, UPC SC
930XC-30P-UPC-ST	02616	OTDR, SM TRIPLE PON, 13/14/15, OPM, SLS, UPC ST
930XC-30P-APC-FC	02618	OTDR, SM TRIPLE PON, 13/14/15, OPM, SLS, APC FC
930XC-30P-APC-SC	02617	OTDR, SM TRIPLE PON, 13/14/15, OPM, SLS, APC SC
TRIPLE WAVELENGTH SINGLE MODE FILTERED OTDRS		
930XC-30F-UPC-FC	02620	OTDR, SM TRIPLE FILT, 13/15/16, OPM, SLS, UPC FC
930XC-30F-UPC-SC	02619	OTDR, SM TRIPLE FILT, 13/15/16, OPM, SLS, UPC SC
930XC-30F-UPC-ST	02621	OTDR, SM TRIPLE FILT, 13/15/16, OPM, SLS, UPC ST
930XC-30F-APC-FC	02626	OTDR, SM TRIPLE FILT, 13/15/16, OPM, SLS, APC FC
930XC-30F-APC-SC	02623	OTDR, SM TRIPLE FILT, 13/15/16, OPM, SLS, APC SC

CAT NO.	UPC NO.	DESCRIPTION
MULTI-MODE OTDR		
930XC-20M-UPC-FC	02607	OTDR, MM DUAL WAVE, 85/13, OPM, SLS, UPC FC
930XC-20M-UPC-SC	02606	OTDR, MM DUAL WAVE, 85/13, OPM, SLS, UPC SC
930XC-20M-UPC-ST	02608	OTDR, MM DUAL WAVE, 85/13, OPM, SLS, UPC ST
ACCESSORIES		
AC-ADPT-20-UNI	25691	Universal Power Supply
AC-CONN-FC-L2	20996	FC Connector (For UPC & APC)
AC-CONN-SC-L2	20998	SC Connector (For UPC & APC)
AC-CONN-ST-L2	20997	ST Connector (For UPC Only)
1155-0526	10582	Vehicle Adaptor (6FT, 5.5 OD, 2.1M)
20988	20988	Soft Carry Case
20989	20989	USB Cable For OTDR
20990	20999	RS-232 Cable
20999	20999	NiMH Battery (9.6V)
946	60571	Cleaning Wand (10/PK)
948	60692	ReelCleaner™ Connector Cleaning System